

## SCHOOLS EDUCATION PROGRAMME AT QUEENSWOOD

### KEY STAGE 1 & 2

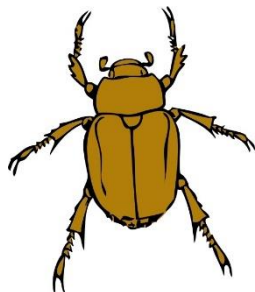
We can adapt the following sessions for either Key Stage 1 or Key Stage 2:

#### Session

#### Description

#### Curriculum links

### WE'RE GOING ON A BUG HUNT / MINIBEAST ID AND CLASSIFICATION



Looking for bugs in the woodland  
Identification using magnifiers and ID  
Sheets  
Bug Bingo  
Bug Art / minibeast homes  
KS2 – 5 categories

Science – animals, skeletons  
living things, habitats  
English - comprehension  
Maths – measurement, number  
Art – design, techniques

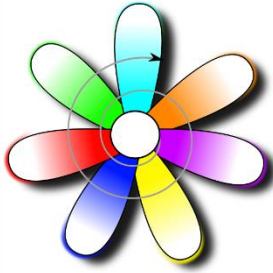
### WOODLAND HABITAT AND ECOLOGY



Who lives in the woodland?  
Categories of woodland life  
Different woodland habitats  
– measuring light / temperature  
Wildlife adaptations  
Woodland food web

Science – Plants and parts,  
animals, habitats, light, working  
scientifically  
Maths - measurement  
English – reading, listening,  
speaking to an audience

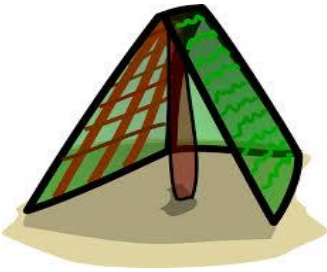
## SPRING SUSTAINABILITY



How does Nature sustain itself?  
Reduce, refuse, recycle, compost!  
Nest Game  
Make a mini compost / sow a seed  
– to take home

**Science** – how plants grow,  
Energy cycles  
**Art** – design, develop techniques

## SURVIVING IN THE WILD

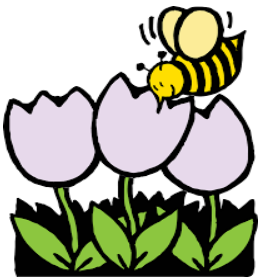


Animals make their own shelter  
How would we survive?  
Den building  
Fire starting  
Forest skills



**Science** – animals and humans,  
everyday materials, working  
scientifically  
**English** – spoken language  
**Geography** – location and place  
**History** – survival in ancient times  
**Art and design** - technology

## BUZZ ABOUT QUEENSWOOD



Best in the summer term  
What are pollinators?  
Why are they important & how can we help?  
Buzz around and Pollinator spotting  
Make a bee hotel / seed bombs /pollinator  
feeding station

**Science** – animals and humans,  
living things, habitats, plants  
**Geography** – location and place  
**Art and design** - technology

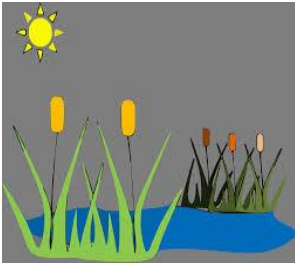
## EXPLORE AUTUMN



Exploring the seasonal changes.  
How does an acorn grow?  
– find and plant one to take home  
Hibernation science – hedgehogs  
Build a Hedgehog hibernaculum  
Make Leaf Art and Leaf Headbands

**Science** - plant growth, animals,  
Habitat, nutrition, seasonal  
change  
**Art** – creative design, experiment  
with materials

## WILD ABOUT WETLANDS AT BODENHAM



Lake ecology  
Bird spotting with binoculars  
Bird migration  
Pond dipping  
Water food chains

**Science** – animals, habitats,  
working scientifically, plants  
**Geography** – location, place,  
world geography

## WOODLAND GATEWAY

Please download our free Key Stage 2 Education Pack for your own use:

[http://www.queenswoodandbodenhamlake.org/sites/default/files/qw\\_heritage\\_gateway\\_ks2\\_educational\\_pack.pdf](http://www.queenswoodandbodenhamlake.org/sites/default/files/qw_heritage_gateway_ks2_educational_pack.pdf)

## SESSIONS FOR EARLY YEARS:

### THE VERY HUNGRY CATERPILLAR

Suitable for the Summer term.

Can you come and find caterpillars and other bugs that live in the woods?

We will make pictures using fruit printing and cook a snack for the hungry caterpillar on the camp fire, as well as make your own pair of beautiful butterfly wings to take home.

This session is based on the story book '*The Very Hungry Caterpillar*' by Eric Carle.



### IT WAS A COLD DARK NIGHT



Suitable for the Autumn term

Come and explore the woods to learn all about Ned the hedgehog.

Build Ned a home to hibernate in, go bug hunting for hedgehog food and make a hedgehog out of natural materials to take home.

This session is based on the story '*It Was a Cold, Dark Night*' by Tim Hopgood.

Please contact us if you need us to tailor a session to your learning objectives.

Our Forest School trained teachers can facilitate practical skills lessons linked to History

– eg Stone Age fire making, cooking on a fire, shelter making, wood carving (skills that offer a risk benefit)

We can also provide sessions for Key Stage 3.

## BOOKING INFORMATION FOR SCHOOL SESSIONS:

All sessions last 2 hours

### Price:

Up to 15 children £100

15 – 30 children £150

Contact: [k.roberts@queenswoodandbodenhamlake.org](mailto:k.roberts@queenswoodandbodenhamlake.org)